

# NOCE TRAVERTINE



Concrete Pavers • Stone Pavers • Tiles • Garden Walls & Edging  
Retaining Walls • Concrete Sleepers • Concrete Blocks • Wall Cladding

# NOCE TRAVERTINE



**BEST PRICE** >>>  
*promise* - terms and conditions apply

## FEATURES

- Elegant, unique and timeless
- Cool under foot
- Slip resistant
- Free samples available

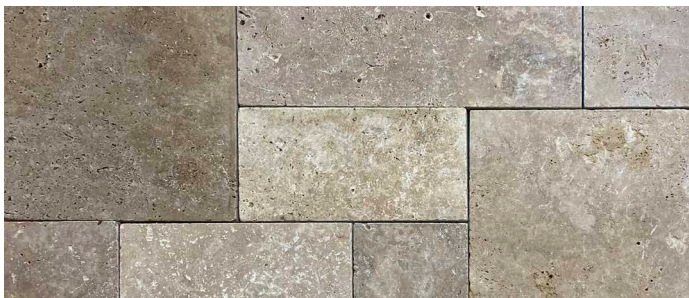
## SUITABLE FOR

- Indoor and outdoor applications
- Pool safe (salt resistant)
- Courtyards, entertaining areas and patios
- Patios and alfresco

Specifications	Size	No. per m <sup>2</sup>	Weight per m <sup>2</sup>	m <sup>2</sup> per pallet OR unit
Tile	600 x 300 x 12mm	5.55	32kg	28.8
Paver	600 x 300 x 30mm	5.55	78.18kg	11.88
French Pattern	Avail. 12 & 30mm	N/A	32 - 78kg	38.5 - 16.28
Bullnose & Aris Edge	600 x 300 x 30mm	N/A	14kg each	N/A
Drop Face	600 x 300 x 30/70mm	N/A	17kg each	40

## COLOUR RANGE\*

Noce



\*Colours are an indication only. Always sight physical product colour samples before purchase.



[www.australianpaving.com.au](http://www.australianpaving.com.au)

  [australianpavingcentre](https://www.instagram.com/australianpavingcentre)

UNIFORM APPEARANCE



V1

SLIGHT APPEARANCE



V2

MODERATE APPEARANCE



V3

SUBSTANTIAL APPEARANCE



V4