

RECONSTITUTED SANDSTONE



Sandstone

1800 191 131
australianpaving.com



RECONSTITUTED SANDSTONE

Features

- Will not fade, bleach or go dull and powdery
- Low slip rating
- Improves with age
- Stains easily removed
- Sand sourced from natural water spring
- Handmade
- 42mpa strength rating
- Large format sizes
- Cool underfoot*

*Sandstone and Latte only

Suitable for

- Alfresco
- Pool Safe
- Courtyards, entertaining areas and patios
- Garden paths, stepping stones and walkways
- Driveways* (330 x 330 x 50mm only)

Colour range*

Sandstone



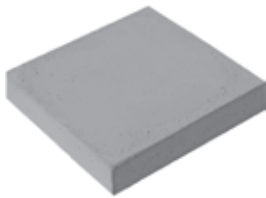
Latte



Charcoal



Industrial Grey



*Colours are an indication only and may differ



Sandstone

Sizes

Square or round edge

500 x 500 x 50mm

600 x 600 x 50mm

750 x 500 x 50mm

Driveway Range*

330 x 330 x 50mm